



JOHNSON COUNTY
COMMISSIONERS COURT

MAY 23 2023

April Long
County Clerk Johnson County Texas
BY [Signature] DEPUTY

Christopher Boedeker
County Judge

Rick Bailey
Commissioner
Precinct 1

Kenny Howell
Commissioner
Precinct 2

Mike White
Commissioner
Precinct 3

Larry Woolley
Commissioner
Precinct 4

THE STATE OF TEXAS

COUNTY OF JOHNSON

§
§
§

ORDER 2023-35

ORDER APPROVING PLAT

WHEREAS, Chapter 232 of the Texas Local Government Code requires the owner of a tract of land located outside the limits of a municipality to have a plat of the subdivision prepared if the owner divides the tract of land into two or more parts to lay out: (1) a subdivision of the tract, including an addition; (2) lots; or (3) streets, alleys, squares, parks, or other parts of the tract intended to be dedicated to public use or for the use of purchasers or owners of lots fronting on or adjacent to the streets, alleys, squares, parks or other parts; and

WHEREAS, an application for a plat of a subdivision has been presented to the Public Works Department of Johnson County; and

WHEREAS, the application for the plat of the subdivision meets the requirements of Chapter 232 of the Texas Local Government Code and the requirements of the Subdivision Rules and Regulations of Johnson County, Texas as currently amended; and

WHEREAS, a motion was made by Commissioner White, Pct. 3 and seconded by Commissioner Woolley, Pct. 4 that stated: "I make the motion to approve for filing purposes only, a Plat of **Jorge Luis Hernandez Addition**, Lot 1 and Lot 2, Block 1, in Precinct 4 and clarify that the filing of the plat which dedicates roads and streets to the public **does not** make those roads and streets county roads subject to county maintenance."

Said motion was approved by a vote of the Commissioners Court on the 22nd day of May 2023.

NOW THEREFORE BE IT RESOLVED AND ORDERED:

The Commissioners Court of Johnson County, Texas does hereby enter this Order approving the Plat of **Jorge Luis Hernandez Addition**, Lot 1 and Lot 2, Block 1, in Precinct 4 for filing purposes only and clarifying that the filing of the plat which dedicates roads and streets to the public **does not** make those roads and streets county roads subject to county maintenance.

WITNESS OUR HAND THIS, THE 22ND DAY OF MAY 2023.

Christopher Boedeker

Christopher Boedeker, Johnson County Judge

Voted: yes, no, abstained

Rick Bailey

Rick Bailey, Comm. Pct. 1

Voted: yes, no, abstained

Kenny Howell

Kenny Howell, Comm. Pct. 2

Voted: yes, no, abstained

Mike White

Mike White, Comm. Pct. 3

Voted: yes, no, abstained

Larry Woolley

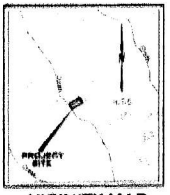
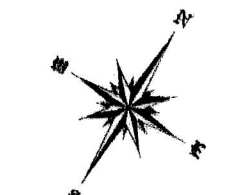
Larry Woolley, Comm. Pct. 4

Voted: yes, no, abstained

April Long

ATTEST: April Long, County Clerk





VICINITY MAP (NOT TO SCALE)

LEGEND table with 2 columns: Symbol/Abbreviation and Description. Includes symbols for 1/4", 1/2", 3/4", and 1" lines.



Table with 3 columns: Line Style, Line Color, and Line Width. Includes symbols for 1/4", 1/2", 3/4", and 1" lines.

- 1. ALL TRACES AND COMMERCIAL WATER PURCHASE ARE CORRELATED TO THE YEAR STATE BY THE COMMISSIONER OF LANDS AND WATER...
2. THE LOCATION OF THE CENTER OF GRAVITY OF THE EARTH...
3. 1/2" SPACED SECTION DATA...
4. THE EAST LINE TO JOHNSON COUNTY SPECIAL UTILITY DISTRICT...
5. THE EAST LINE TO JOHNSON COUNTY SPECIAL UTILITY DISTRICT...
6. THE EAST LINE TO JOHNSON COUNTY SPECIAL UTILITY DISTRICT...
7. THE EAST LINE TO JOHNSON COUNTY SPECIAL UTILITY DISTRICT...
8. THE EAST LINE TO JOHNSON COUNTY SPECIAL UTILITY DISTRICT...
9. THE EAST LINE TO JOHNSON COUNTY SPECIAL UTILITY DISTRICT...

HOW RELEVANT AS TO ALL USES OF THIS PROPERTY...
THIS INSTRUMENT HAS BEEN RECORDED IN THE PUBLIC RECORDS OF JOHNSON COUNTY, TEXAS...

APPROVED BY JOHNSON COUNTY COMMISSIONER'S COURT ON THE 20th DAY OF APRIL 2023.
COUNTY CLERK: JOHNSON COUNTY, TEXAS.
COUNTY JUDGE: ...

PLAT RECORDED IN: ...
YEAR: ...
DATE: ...
COUNTY CLERK: JOHNSON COUNTY, TEXAS.
COUNTY JUDGE: ...

THIS INSTRUMENT IS FILED IN THE PUBLIC RECORDS OF JOHNSON COUNTY, TEXAS...

SECTION 100.001, CIVIL PENAL CODE, STATE OF TEXAS...
SECTION 100.002, CIVIL PENAL CODE, STATE OF TEXAS...
SECTION 100.003, CIVIL PENAL CODE, STATE OF TEXAS...

JOHNSON COUNTY, TEXAS NOTES...
1. THIS REMUNERAL OR ANY PART THEREOF IS NOT LIENED UPON THE FULL OR ANY PART OF THIS...
2. THE PROPOSED LEASE FOR THIS PLAT IS NON-ASSIGNABLE, NON-TRANSFERABLE, NON-RENEWABLE...
3. UTILITY EASEMENTS...

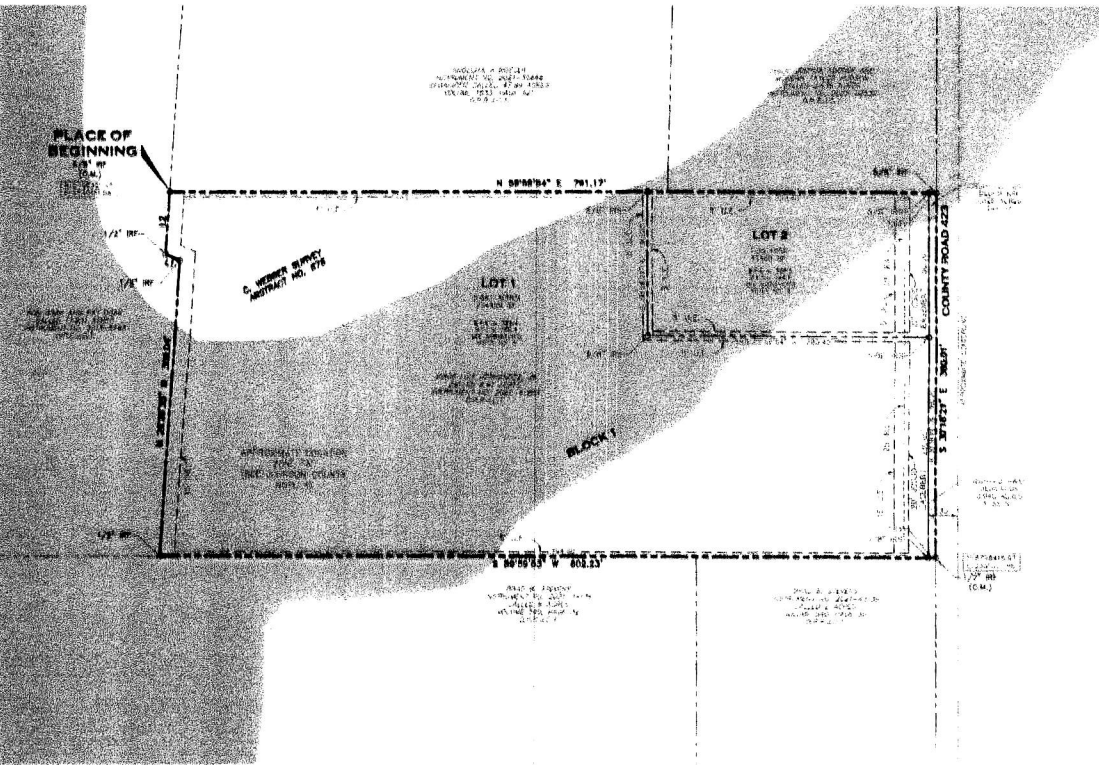
4. JOHNSON COUNTY WILL NOT BE RESPONSIBLE FOR ANY CHANGE, PERSONAL INJURY OR LOSS OF LIFE OR PROPERTY...
5. JOHNSON COUNTY HAS THE RIGHT TO INJECT WATER INTO THE PROPERTY AND TO OPERATE AND MAINTAIN...
6. UTILITY EASEMENTS...

7. UTILITY EASEMENTS...
8. FROM LOT LINE ON FRONT TO CENTER OF ROAD...

9. FROM LOT LINE ON FRONT TO CENTER OF ROAD...
10. FROM LOT LINE ON FRONT TO CENTER OF ROAD...

11. FROM LOT LINE ON FRONT TO CENTER OF ROAD...
12. FROM LOT LINE ON FRONT TO CENTER OF ROAD...

13. FROM LOT LINE ON FRONT TO CENTER OF ROAD...
14. FROM LOT LINE ON FRONT TO CENTER OF ROAD...



SURVEYOR'S CERTIFICATION...
I, ROBERT L. JORGENSEN, SURVEYOR, DO HEREBY CERTIFY THAT I HAVE PREPARED THIS PLAN FROM AN ACCURATE AND COMPLETE SURVEY...

JOHNSON COUNTY, TEXAS...
COUNTY CLERK: JOHNSON COUNTY, TEXAS...

FINAL PLAT SHOWING LOT 1 AND LOT 2, BLOCK 1, JORGE LUIS HERNANDEZ ADDITION AN ADDITION TO JOHNSON COUNTY, TEXAS BEING 6.807 ACRES OF LAND LOCATED IN THE C. WEBBER SURVEY, ABSTRACT NO. 876, JOHNSON COUNTY, TEXAS. Includes logo for Trans Texas Surveying and Mapping.