

JOHNSON COUNTY COMMISSIONERS COURT



JAN 27 2020

Becky Ivey
County Clerk, Johnson County Texas
BY MA DEPUTY

RICK BAILEY
Commissioner Pct. #1

ROGER HARMON
County Judge

JERRY D. STRINGER
Commissioner Pct. #3

KENNY HOWELL
Commissioner Pct. #2

Carla Hester
Assistant to Commissioner's Court

LARRY WOOLLEY
Commissioner Pct. #4

STATE OF TEXAS

§
§
§

ORDER #2020-04

COUNTY OF JOHNSON

ORDER APPROVING PLAT

WHEREAS, Chapter 232 of the Texas Local Government Code requires the owner of a tract of land located outside the limits of a municipality to have a plat of the subdivision prepared if the owner divides the tract of land into two or more parts to lay out: (1) a subdivision of the tract, including an addition; (2) lots; or (3) streets, alleys, squares, parks, or other parts of the tract intended to be dedicated to public use or for the use of purchasers or owners of lots fronting on or adjacent to the streets, alleys, squares, parks or other parts; and

WHEREAS, an application for a plat of a subdivision has been presented to the Public Works Department of Johnson County; and

WHEREAS, the application for the plat of the subdivision meets the requirements of Chapter 232 of the Texas Local Government Code and the requirements of the Subdivision Rules and Regulations of Johnson County, Texas as currently amended; and

WHEREAS, a motion was made by Commissioner Woolley, Pct. #4 and seconded by Commissioner Stringer, Pct. #3 that stated: "I make the motion to approve for filing purposes only, a Plat of **Abel Perez Addition**, Lot 1, Block 1, in Johnson County, Texas, Precinct #4 and clarify that the filing of the plat which dedicates roads and streets to the public **does not** make those roads and streets county roads subject to county maintenance."

Said motion was approved by a vote of the Commissioners Court on the 27th day of January, 2020.

NOW THEREFORE BE IT RESOLVED AND ORDERED:

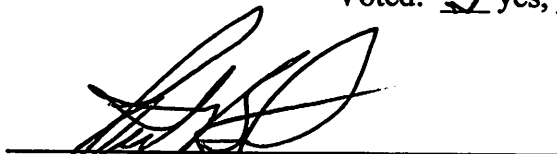

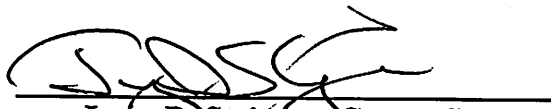

The Commissioners Court of Johnson County, Texas does hereby enter this order approving the Plat Abel Perez Addition, Lot 1, Block 1, in Johnson County, Texas, Precinct #4, for filing purposes only and clarifying that the filing of the plat which dedicates roads and streets to the public does not make those roads and streets county roads subject to county maintenance.

WITNESS OUR HAND THIS, THE 27th DAY OF JANUARY, 2020.



Roger Harmon, Johnson County Judge

Voted: yes, no, abstained


Rick Bailey, Comm. Pct. #1
Voted: yes, no, abstained
Kenny Howell, Comm. Pct. #2
Voted: yes, no, abstained
Jerry D. Stringer, Comm. Pct. #3
Voted: yes, no, abstained
Larry Woolley, Comm. Pct. #4
Voted: yes, no, abstained

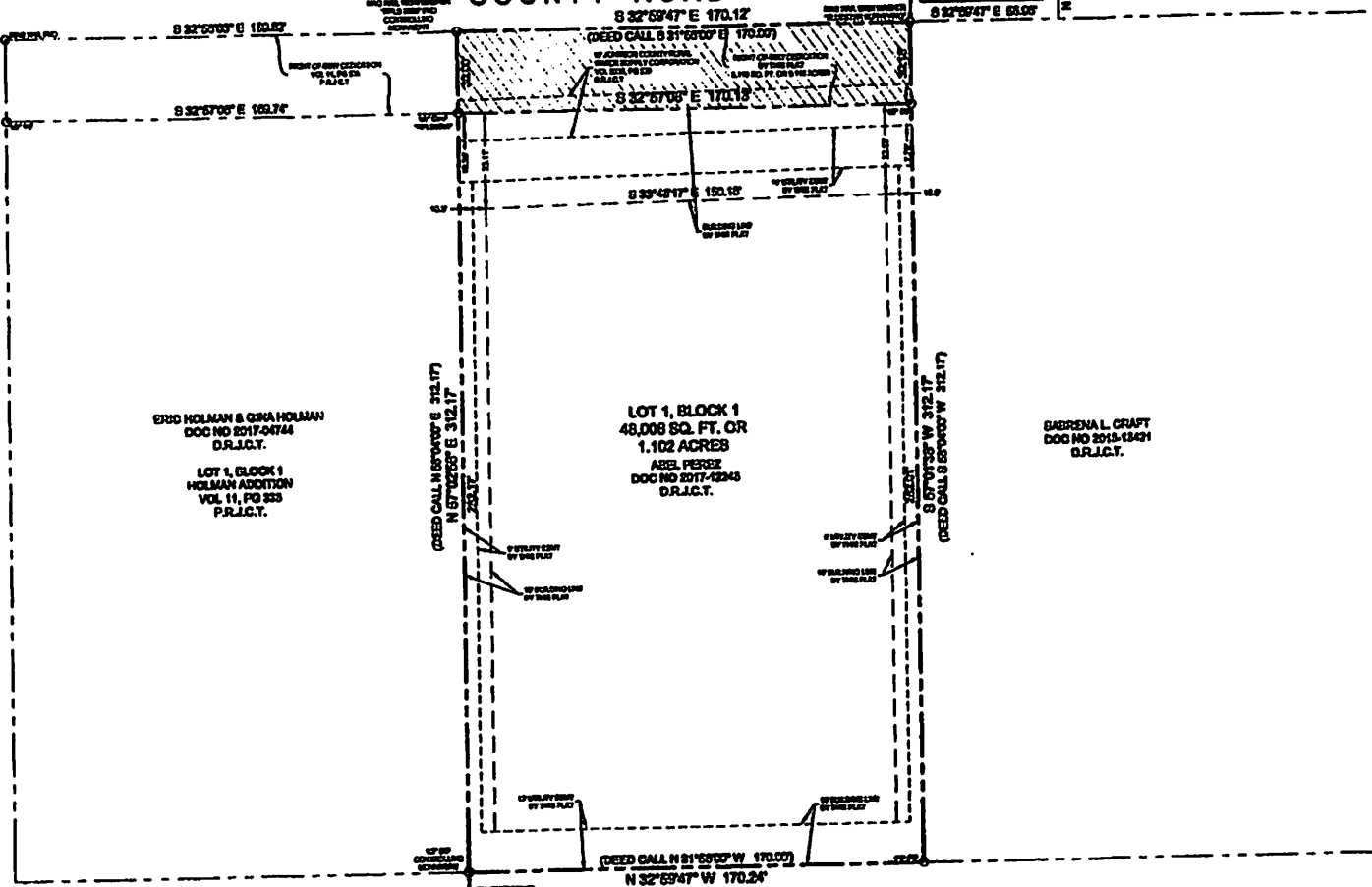
ATTEST: 
Becky Ivey, County Clerk



(CALLED 12.712 ACRES)
 RONNIE J. SPENCER ETUX
 CATHERINE G. SPENCER
 DOC NO. 2013-04285
 D.R.J.C.T.

COUNTY ROAD NO. 417A

STATE PLATE NUMBER
 N-0007099-0915
 S-2330782-0163



ERD HOLMAN & CPA HOLMAN
 DOC NO 2017-04744
 D.R.J.C.T.

LOT 1, BLOCK 1
 HOLMAN ADDITION
 VOL 11, PG 333
 P.R.J.C.T.

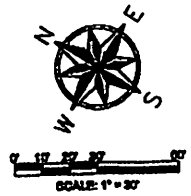
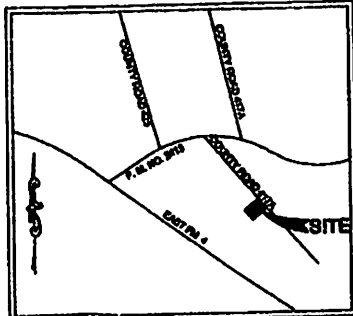
LOT 1, BLOCK 1
 48,008 SQ. FT. OR
 1.102 ACRES
 ABEL PEREZ
 DOC NO 2017-12243
 D.R.J.C.T.

GARRONA L. CRAFT
 DOC NO 2015-13421
 D.R.J.C.T.

P.O.B.
 STATE PLATE NUMBER
 N-0007072-4281
 S-2330782-4182

CHERYL HOLLAND MOORE
 DOC NO 2015-07870
 D.R.J.C.T.

VICINITY MAP
 NTS



FINAL PLAT
 ABEL PEREZ ADDITION
 LOT 1, BLOCK 1

1.220 ACRES
 OUT OF THE
 JAMES WALLACE SURVEY, ABSTRACT NO. 863
 AN ADDITION TO JOHNSON COUNTY, TEXAS

OWNER:
 ABEL PEREZ
 905 N DOUGLAS
 CLEBURNE TEXAS, 75223
 PHONE NUMBER: 817-774-6314

BLUESTAR SURVEYING, INC. IS AN EQUAL OPPORTUNITY FIRM. WE DO NOT DISCRIMINATE ON THE BASIS OF RACE, GENDER, RELIGION, NATIONAL ORIGIN, ANCESTRY, COLOR, SEX, OR AGE. WE ARE AN AFFIRMATIVE ACTION EMPLOYER. WE ARE AN EQUAL OPPORTUNITY EMPLOYER. WE ARE AN EQUAL OPPORTUNITY CONTRACTOR. WE ARE AN EQUAL OPPORTUNITY SUBCONTRACTOR. WE ARE AN EQUAL OPPORTUNITY VENDOR. WE ARE AN EQUAL OPPORTUNITY SERVICE PROVIDER. WE ARE AN EQUAL OPPORTUNITY BUSINESS DEVELOPER. WE ARE AN EQUAL OPPORTUNITY PARTNER. WE ARE AN EQUAL OPPORTUNITY COLLABORATOR. WE ARE AN EQUAL OPPORTUNITY ALLY. WE ARE AN EQUAL OPPORTUNITY FRIEND. WE ARE AN EQUAL OPPORTUNITY NEIGHBOR. WE ARE AN EQUAL OPPORTUNITY COMMUNITY MEMBER. WE ARE AN EQUAL OPPORTUNITY CITIZEN. WE ARE AN EQUAL OPPORTUNITY HUMAN. WE ARE AN EQUAL OPPORTUNITY BEING.

BLUESTAR SURVEYING

PLAT NUMBER 10167900
 10167900-001
 017-88-2220
 017-88-2220
 WWW.BLUESTARSURVEYING.COM

JN 19-255 SHEET 1 OF 2 DATE: 12/8/2019

